



We have developed our forming skills to handle all metals, and apply heat and chemical surface treatments in our workshops.

We are tooled to work with materials 0.03-5.00 mm thick and 3-490 mm wide.



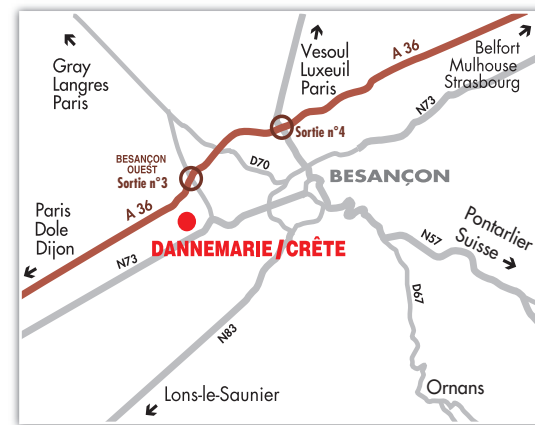
Orders for work on the following materials can be accepted: steels, aluminium, copper (a speciality of ours), bronze, brass, beryllium copper alloys (CuBe2), and stainless steels.



AFAQ ISO 9001: 2000 and AFAQ ISO TS 16949: 2002 certification endorse our commitment to quality in all our processes.

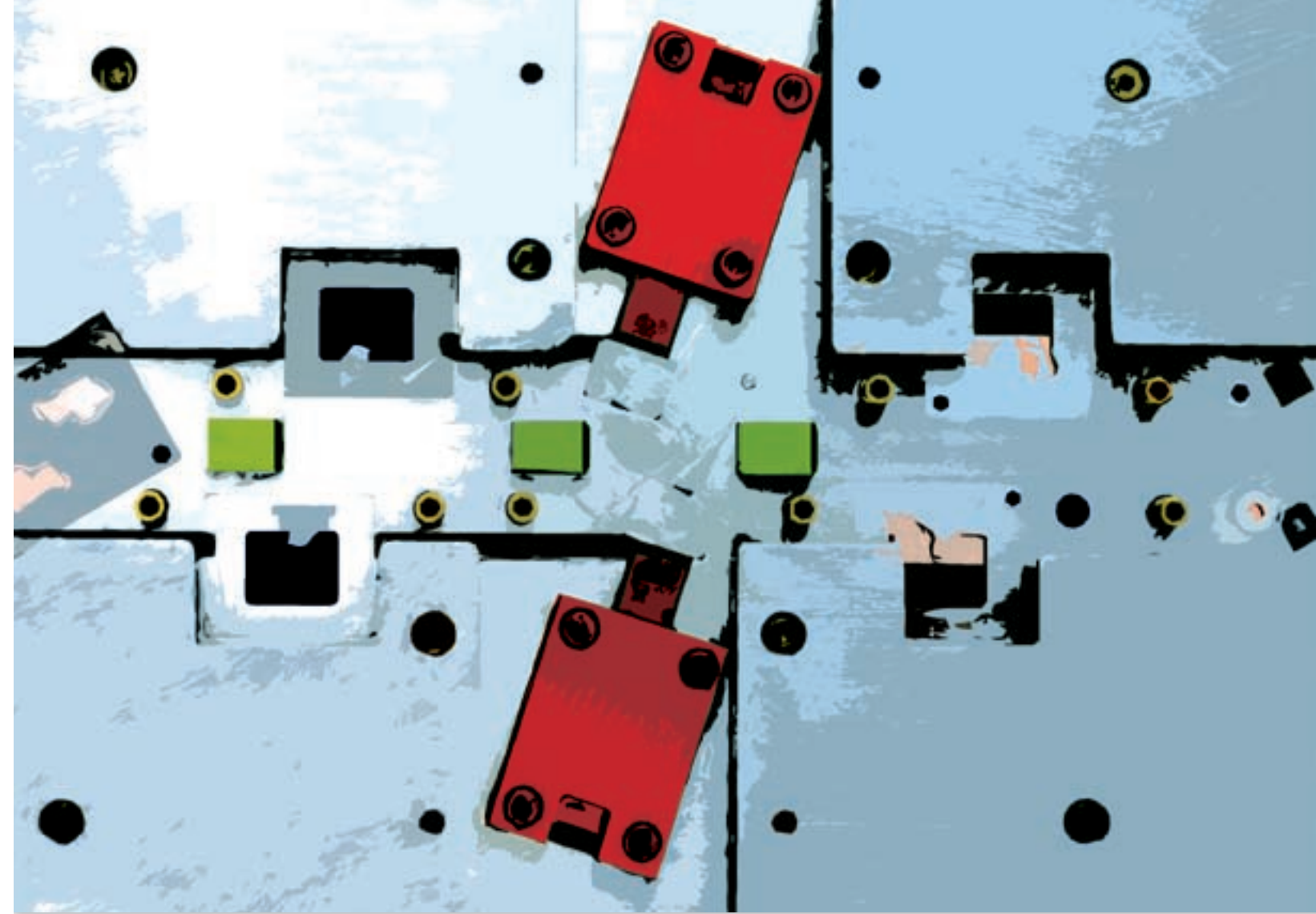
Over sixty years of quality work, responsiveness and leading-edge expertise in the fields of tools and dies, drawing, stamping and medium- and small-run assembly operations have made the Fein company name (est. 1946) what it is today.

Our know-how is held in high regard by our demanding customers whose needs are as varied as their lines of activity (automotive, electrical gear, connectors, miscellaneous mechanical parts, etc.). Fein makes a point of putting its expertise in forming all types of metals, and also (heat or chemical) finishing treatments to the service of its customers. Once the components leave our premises they will be implemented by a skilled network of local subcontractors to be turned into finished products that benefit from their full technical value.



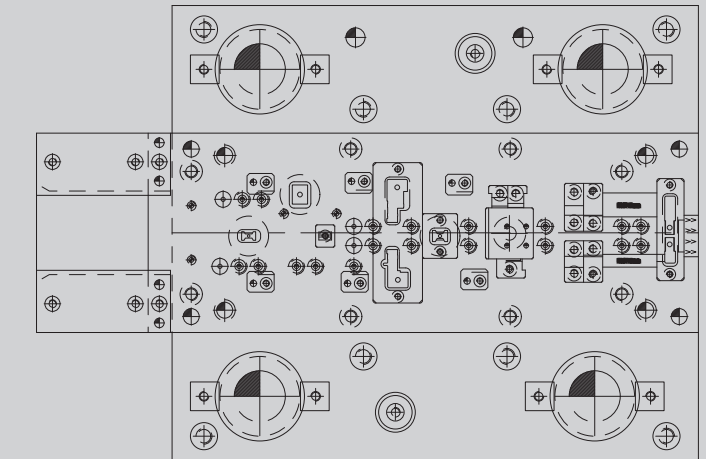
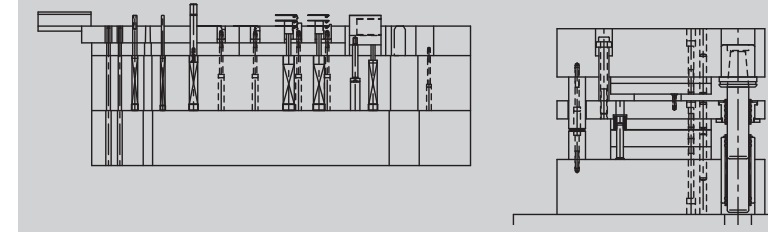
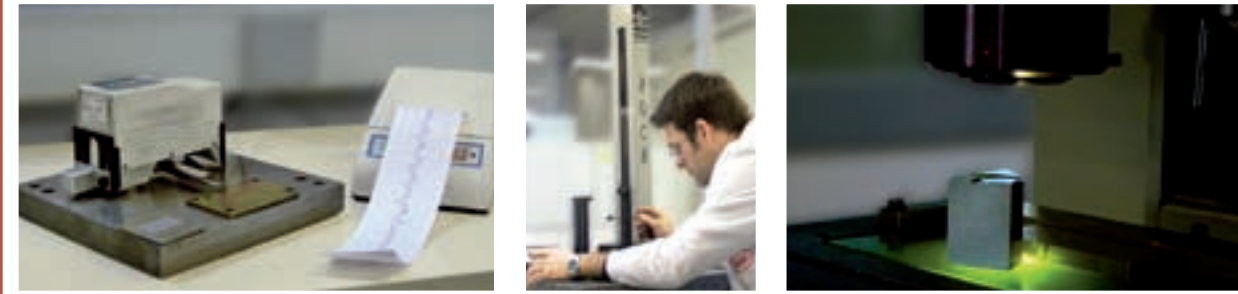
Rue Pythagore - ZI au Sorbier
25410 DANNEMARIE-SUR-CRÊTE
Tél. : +33 (0)3 81 58 68 94
Fax : +33 (0)3 81 58 51 44
E-mail : contact@fein-sas.fr
www.fein-sas.fr

CACTUS - RCS Besançon B 402 237 170 - IMPRIMÉ EN FRANCE - MAI 2007 - PHOTOS : O. PIERREBOIS, J. GRANDPERRIN, P. BICHET



Stamping - Drawing
Precision tools





Our strengths are

- Quality (ISO 9001: 2000 and ISO/TS 16949: 2002- certified)
- Capacity for response (optimising production flows to meet customers' needs)
- Know-how, experience and meticulous tool design work for complex parts

Manufacturing

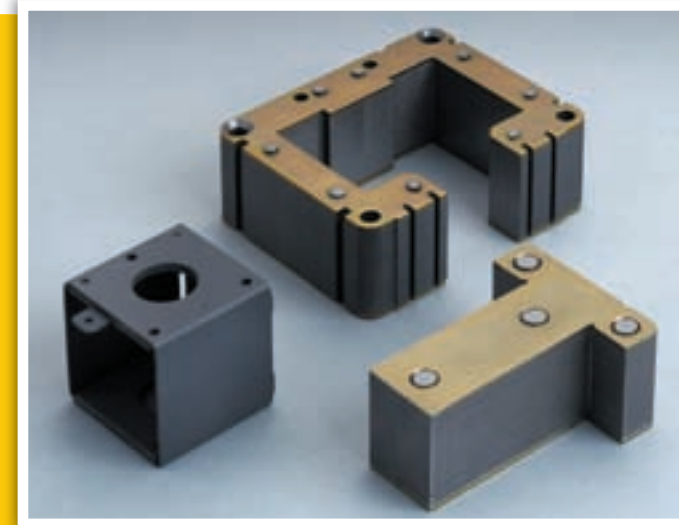
Our extensive and wide-ranging machine base comprising the fifteen or so 15-250 T stamping presses, 30 T hydraulic press, automatic tapping machines, spot-welding machine and several manual and semi-automatic assembly benches is designed to meet every possible customer requirement.

Stamping, drawing and assembly

After the metal has been stamped and/or drawn, the parts coming off our production line can then be assembled together or with externally-sourced components to make up subassemblies that are ready for delivery.

Chemical and/or heat surface treatments are either applied inter-operation or on the final production output.

Small and medium production runs: from 50 to 2 million parts per run, with an average throughput of 20000 parts.



Tools and dies

We design, build and service our tools and dies in-house in the interests of:

- ▶ Cost control and development time management
- ▶ Immediate availability for use in production
- ▶ Adjustment precision in production
- ▶ The confidence of producing highly technical parts.

Production and servicing

Our workshops are fully equipped with wire spark-erosion machines, flat surface grinders, lathes, milling machines, etc. for tool-making and servicing.

